

41-26

# MELROSE PARK SECTION I

A PLAT OF A PORTION OF SECT. 7 & 18, TOWNSHIP 45 SOUTH, RANGE 42 EAST  
AND ALSO BEING A REPLAT OF TRACTS 1 THROUGH 44 AND 46 THROUGH 61, BLOCK 45, PALM BEACH FARMS  
COMPANY, PLAT NO. 3, AS RECORDED IN PLAT BOOK 2, PAGE 49, PUBLIC RECORDS OF PALM BEACH COUNTY, FLORIDA

JOHN A. GRANT, JR.,

CONSULTING ENGINEERS AND LAND SURVEYORS

BOCA RATON, FLORIDA



OCTOBER 1979  
SHEET 5 OF 5

P.R.M. Indicates Permanent Reference Monument  
P.C.P. Indicates Permanent Control Point  
U.E. Indicates Utility Easement  
D.E. Indicates Drainage Easement  
L.A. Indicates Limited Access Easement  
NOTE: No buildings, fences, or shrubs will be placed on easements

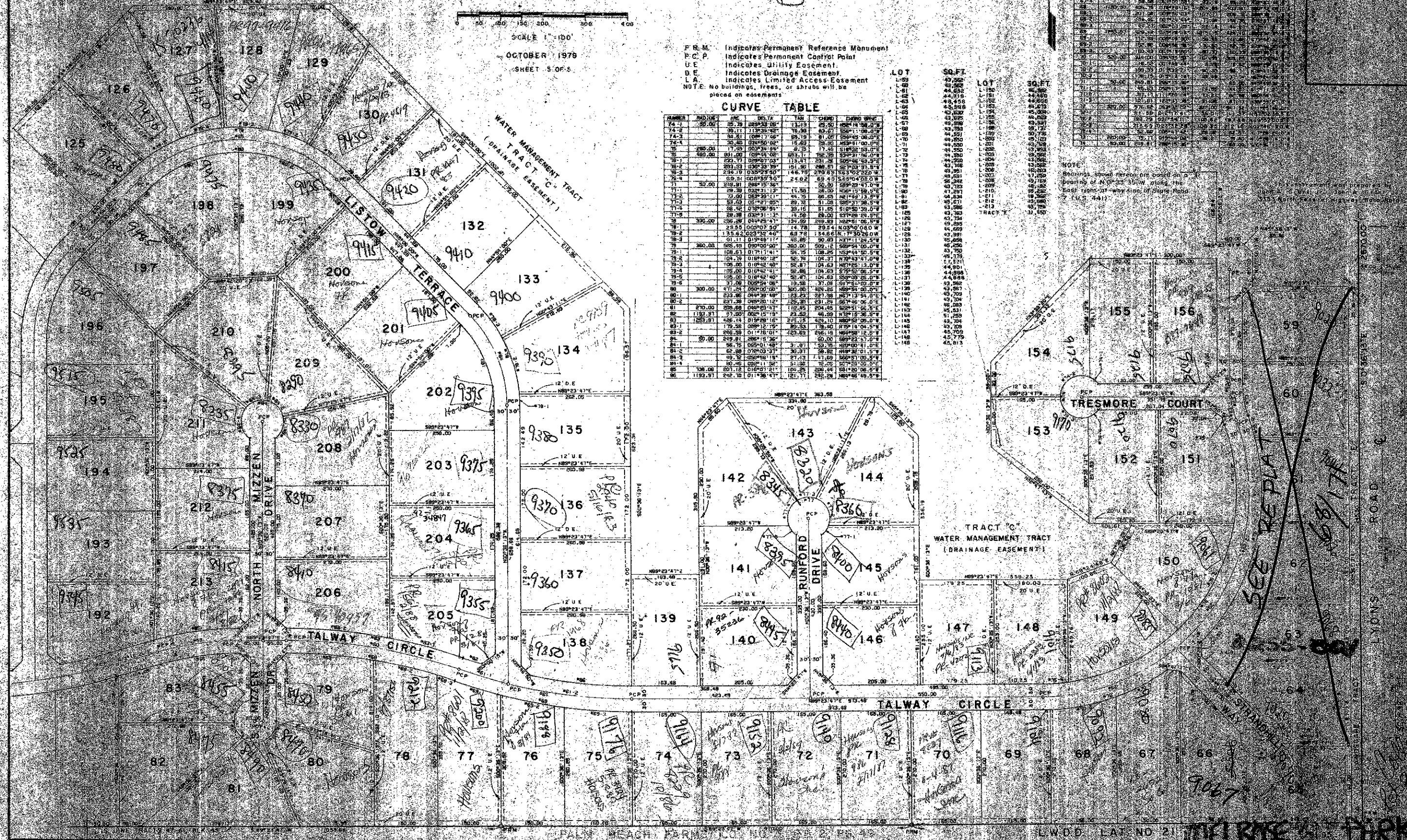
### CURVE TABLE

NUMBER	RADIUS	ARC	DELTA	TAN	CHORD	CHORD BEING
74-1	250.00	35.71	113.29	78.39	250.00	194.09
74-2	250.00	35.71	113.29	78.39	250.00	194.09
74-3	250.00	35.71	113.29	78.39	250.00	194.09
74-4	250.00	35.71	113.29	78.39	250.00	194.09
75-1	250.00	35.71	113.29	78.39	250.00	194.09
75-2	250.00	35.71	113.29	78.39	250.00	194.09
75-3	250.00	35.71	113.29	78.39	250.00	194.09
75-4	250.00	35.71	113.29	78.39	250.00	194.09
76-1	250.00	35.71	113.29	78.39	250.00	194.09
76-2	250.00	35.71	113.29	78.39	250.00	194.09
76-3	250.00	35.71	113.29	78.39	250.00	194.09
76-4	250.00	35.71	113.29	78.39	250.00	194.09
77-1	250.00	35.71	113.29	78.39	250.00	194.09
77-2	250.00	35.71	113.29	78.39	250.00	194.09
77-3	250.00	35.71	113.29	78.39	250.00	194.09
77-4	250.00	35.71	113.29	78.39	250.00	194.09
78-1	250.00	35.71	113.29	78.39	250.00	194.09
78-2	250.00	35.71	113.29	78.39	250.00	194.09
78-3	250.00	35.71	113.29	78.39	250.00	194.09
78-4	250.00	35.71	113.29	78.39	250.00	194.09
79-1	250.00	35.71	113.29	78.39	250.00	194.09
79-2	250.00	35.71	113.29	78.39	250.00	194.09
79-3	250.00	35.71	113.29	78.39	250.00	194.09
79-4	250.00	35.71	113.29	78.39	250.00	194.09
80-1	250.00	35.71	113.29	78.39	250.00	194.09
80-2	250.00	35.71	113.29	78.39	250.00	194.09
80-3	250.00	35.71	113.29	78.39	250.00	194.09
80-4	250.00	35.71	113.29	78.39	250.00	194.09
81-1	250.00	35.71	113.29	78.39	250.00	194.09
81-2	250.00	35.71	113.29	78.39	250.00	194.09
81-3	250.00	35.71	113.29	78.39	250.00	194.09
81-4	250.00	35.71	113.29	78.39	250.00	194.09
82-1	250.00	35.71	113.29	78.39	250.00	194.09
82-2	250.00	35.71	113.29	78.39	250.00	194.09
82-3	250.00	35.71	113.29	78.39	250.00	194.09
82-4	250.00	35.71	113.29	78.39	250.00	194.09
83-1	250.00	35.71	113.29	78.39	250.00	194.09
83-2	250.00	35.71	113.29	78.39	250.00	194.09
83-3	250.00	35.71	113.29	78.39	250.00	194.09
83-4	250.00	35.71	113.29	78.39	250.00	194.09
84-1	250.00	35.71	113.29	78.39	250.00	194.09
84-2	250.00	35.71	113.29	78.39	250.00	194.09
84-3	250.00	35.71	113.29	78.39	250.00	194.09
84-4	250.00	35.71	113.29	78.39	250.00	194.09
85-1	250.00	35.71	113.29	78.39	250.00	194.09
85-2	250.00	35.71	113.29	78.39	250.00	194.09
85-3	250.00	35.71	113.29	78.39	250.00	194.09
85-4	250.00	35.71	113.29	78.39	250.00	194.09
86-1	250.00	35.71	113.29	78.39	250.00	194.09
86-2	250.00	35.71	113.29	78.39	250.00	194.09
86-3	250.00	35.71	113.29	78.39	250.00	194.09
86-4	250.00	35.71	113.29	78.39	250.00	194.09

LOT	SQ. FT.
L-61	43,282
L-62	44,458
L-63	44,458
L-64	44,458
L-65	44,458
L-66	44,458
L-67	44,458
L-68	44,458
L-69	44,458
L-70	44,458
L-71	44,458
L-72	44,458
L-73	44,458
L-74	44,458
L-75	44,458
L-76	44,458
L-77	44,458
L-78	44,458
L-79	44,458
L-80	44,458
L-81	44,458
L-82	44,458
L-83	44,458
L-84	44,458
L-85	44,458
L-86	44,458
L-87	44,458
L-88	44,458
L-89	44,458
L-90	44,458
L-91	44,458
L-92	44,458
L-93	44,458
L-94	44,458
L-95	44,458
L-96	44,458
L-97	44,458
L-98	44,458
L-99	44,458
L-100	44,458

LOT	SQ. FT.
L-101	44,458
L-102	44,458
L-103	44,458
L-104	44,458
L-105	44,458
L-106	44,458
L-107	44,458
L-108	44,458
L-109	44,458
L-110	44,458
L-111	44,458
L-112	44,458
L-113	44,458
L-114	44,458
L-115	44,458
L-116	44,458
L-117	44,458
L-118	44,458
L-119	44,458
L-120	44,458
L-121	44,458
L-122	44,458
L-123	44,458
L-124	44,458
L-125	44,458
L-126	44,458
L-127	44,458
L-128	44,458
L-129	44,458
L-130	44,458
L-131	44,458
L-132	44,458
L-133	44,458
L-134	44,458
L-135	44,458
L-136	44,458
L-137	44,458
L-138	44,458
L-139	44,458
L-140	44,458
L-141	44,458
L-142	44,458
L-143	44,458
L-144	44,458
L-145	44,458
L-146	44,458
L-147	44,458
L-148	44,458
L-149	44,458
L-150	44,458

NOTE: Bearings shown hereon are based on a bearing of N 0° 00' 00" W along the East (right) side of State Road 7 (U.S. 441).



### CURVE TABLE

NUMBER	RADIUS	ARC	DELTA	TAN	CHORD	CHORD BEING
1	250.00	35.71	113.29	78.39	250.00	194.09
2	250.00	35.71	113.29	78.39	250.00	194.09
3	250.00	35.71	113.29	78.39	250.00	194.09
4	250.00	35.71	113.29	78.39	250.00	194.09
5	250.00	35.71	113.29	78.39	250.00	194.09
6	250.00	35.71	113.29	78.39	250.00	194.09
7	250.00	35.71	113.29	78.39	250.00	194.09
8	250.00	35.71	113.29	78.39	250.00	194.09
9	250.00	35.71	113.29	78.39	250.00	194.09
10	250.00	35.71	113.29	78.39	250.00	194.09
11	250.00	35.71	113.29	78.39	250.00	194.09
12	250.00	35.71	113.29	78.39	250.00	194.09
13	250.00	35.71	113.29	78.39	250.00	194.09
14	250.00	35.71	113.29	78.39	250.00	194.09
15	250.00	35.71	113.29	78.39	250.00	194.09
16	250.00	35.71	113.29	78.39	250.00	194.09
17	250.00	35.71	113.29	78.39	250.00	194.09
18	250.00	35.71	113.29	78.39	250.00	194.09
19	250.00	35.71	113.29	78.39	250.00	194.09
20	250.00	35.71	113.29	78.39	250.00	194.09
21	250.00	35.71	113.29	78.39	250.00	194.09
22	250.00	35.71	113.29	78.39	250.00	194.09
23	250.00	35.71	113.29	78.39	250.00	194.09
24	250.00	35.71	113.29	78.39	250.00	194.09
25	250.00	35.71	113.29	78.39	250.00	194.09
26	250.00	35.71	113.29	78.39	250.00	194.09
27	250.00	35.71	113.29	78.39	250.00	194.09
28	250.00	35.71	113.29	78.39	250.00	194.09
29	250.00	35.71	113.29	78.39	250.00	194.09
30	250.00	35.71	113.29	78.39	250.00	194.09
31	250.00	35.71	113.29	78.39	250.00	194.09
32	250.00	35.71	113.29	78.39	250.00	194.09
33	250.00	35.71	113.29	78.39	250.00	194.09
34	250.00	35.71	113.29	78.39	250.00	194.09
35	250.00	35.71	113.29	78.39	250.00	194.09
36	250.00	35.71	113.29	78.39	250.00	194.09
37	250.00	35.71	113.29	78.39	250.00	194.09
38	250.00	35.71	113.29	78.39	250.00	194.09
39	250.00	35.71	113.29	78.39	250.00	194.09
40	250.00	35.71	113.29	78.39	250.00	194.09
41	250.00	35.71	113.29	78.39	250.00	194.09
42	250.00	35.71	113.29	78.39	250.00	194.09
43	250.00	35.71	113.29	78.39	250.00	194.09
44	250.00	35.71	113.29	78.39	250.00	194.09
45	250.00	35.71	113.29	78.39	250.00	194.09
46	250.00	35.71	113.29	78.39	250.00	194.09
47	250.00	35.71	113.29	78.39	250.00	194.09
48	250.00	35.71	113.29	78.39	250.00	194.09
49	250.00	35.71	113.29	78.39	250.00	194.09
50	250.00	35.71	113.29	78.39	250.00	194.09
51	250.00	35.71	113.29	78.39	250.00	194.09
52	250.00	35.71	113.29	78.39	250.00	194.09
53	250.00	35.71	113.29	78.39	250.00	194.09
54	250.00	35.71	113.29	78.39	250.00	194.09
55	250.00	35.71	113.29	78.39	250.00	194.09
56	250.00	35.71	113.29	78.39	250.00	194.09
57	250.00	35.71	113.29	78.39	250.00	194.09
58	250.00	35.71	113.29	78.39	250.00	194.09
59	250.00	35.71	113.29	78.39	250.00	194.09
60	250.00	35.71	113.29	78.39	250.00	194.09
61	250.00	35.71	113.29	78.39	250.00	194.09
62	250.00	35.71	113.29	78.39	250.00	194.09
63	250.00	35.71	113.29	78.39	250.00	194.09
64	250.00	35.71	113.29	78.39	250.00	194.09
65	250.00	35.71	113.29	78.39	250.00	194.09
66	250.00	35.71	113.29	78.3		